

ADJUSTMENTS

pag.03

CAPSULE SEALING ADJUSTMENT

The capsule shall adhere to the bottle neck perfectly and show no cuts or scrapes.

To obtain a good adherence adjust the roll working pressure as follows:

A) For a stronger roll pressure on the capsule remove the safety guard item 23 TABLE 08 and pull the black elastic item 6/a TABLE 08 downwards.

B) For a weaker roll pressure on the capsule pull the black elastic item 6/a upwards.

Install the safety guard item 23 TABLE 08 and operate some capsule sealing trials, adjusting accordingly till you obtain a satisfactory capsule sealing.

ATTENTION:

ALL ADJUSTMENTS ARE TO BE PERFORMED ON THE MACHINE STOPPED AND ELECTRICAL PLUG DISCONNECTED FROM THE MAIN POWER SUPPLY.

MAINTENANCE

Check periodically that the rolls turn free and the elastics (item 6 TABLE 08) are in good conditions.

Every 100 working hours lubricate and grease the spring item 14 TABLE 08 and the rod with lubricating oil.

OPTIONAL PRE-SMOOTHING

Check periodically that the black blocks item 4 TABLE 08.1 slide free and the elastic item 1 TABLE 08.1 is in good conditions.

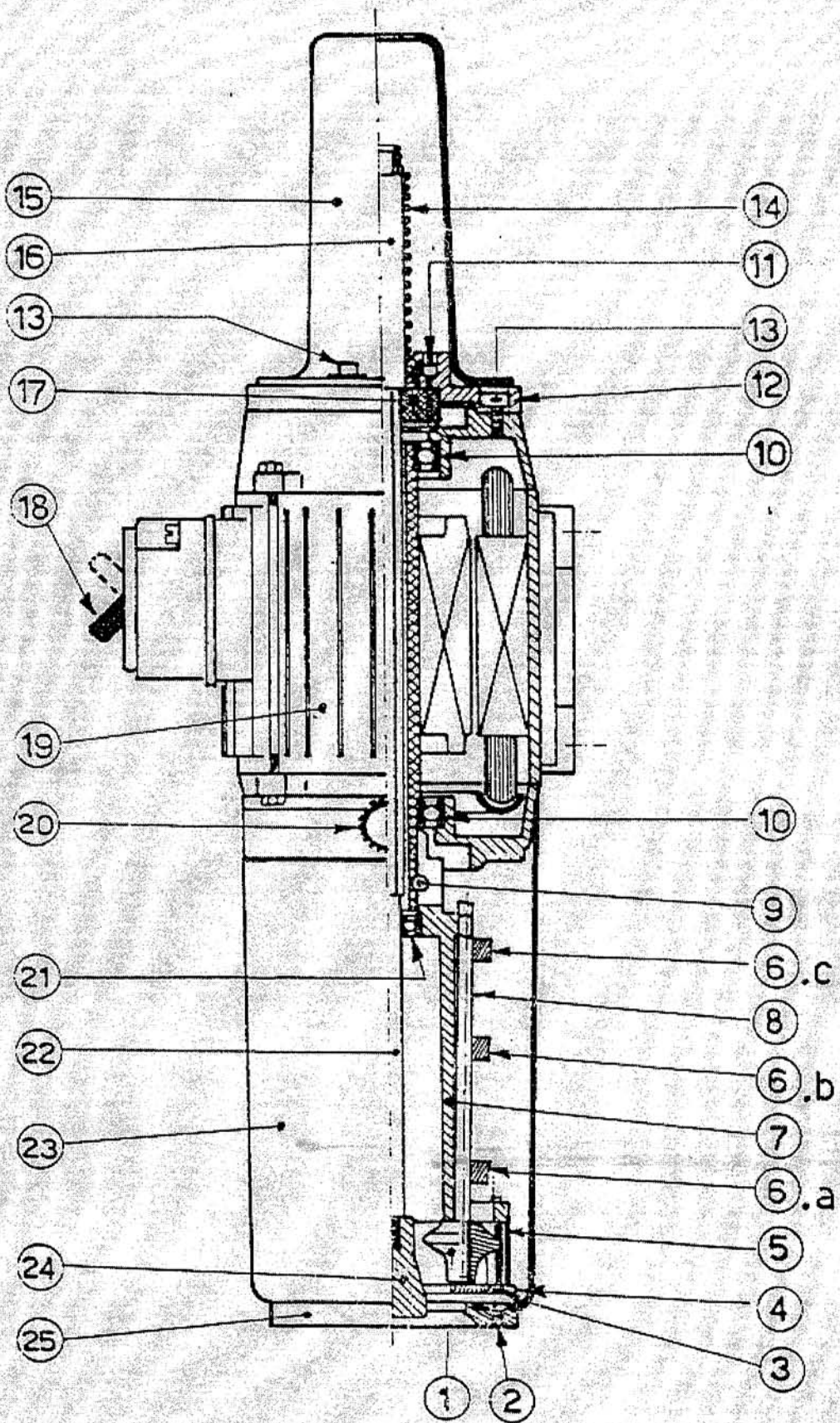
MANUAL ROLL PRESS HEAD

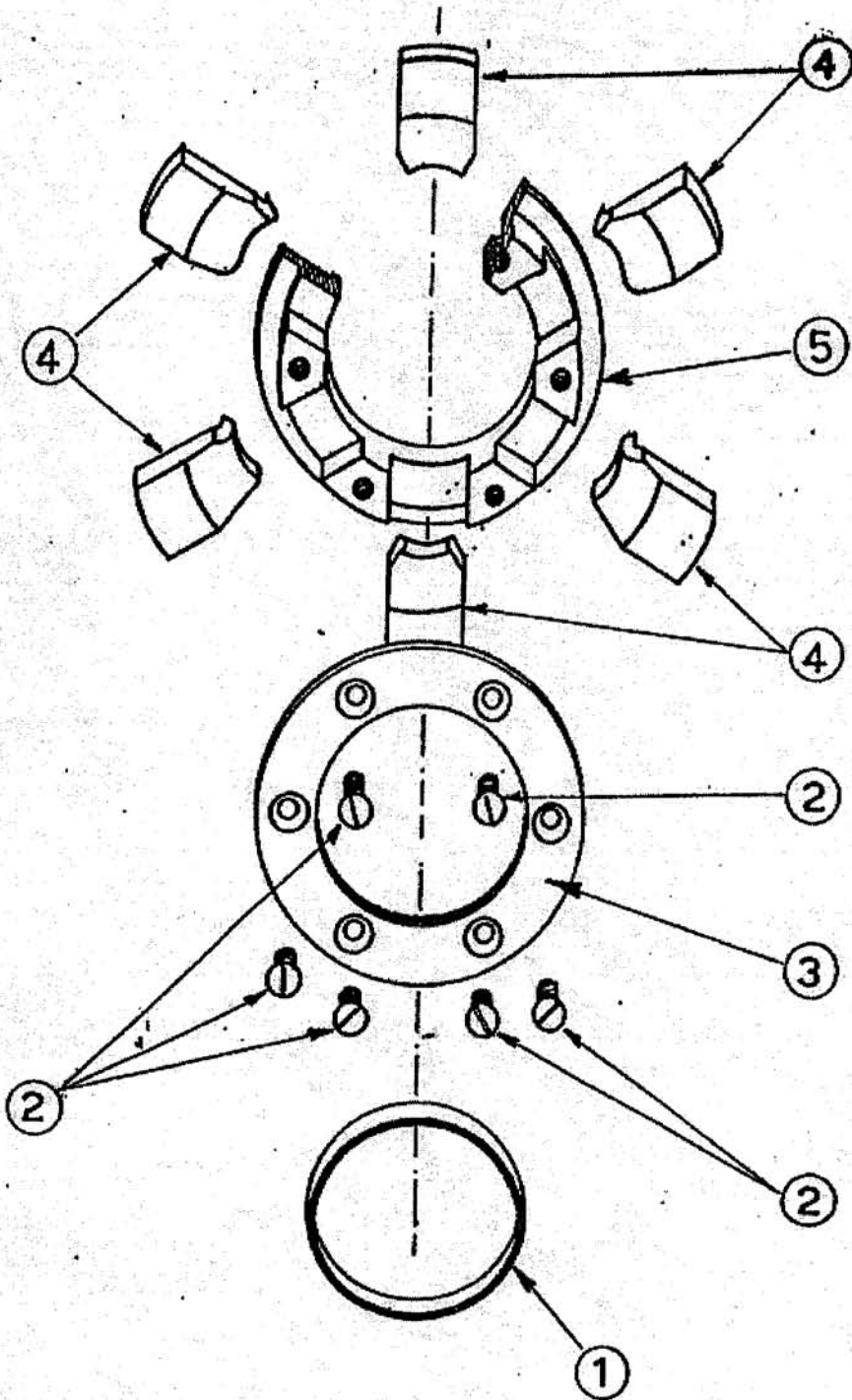
TAV.08

Item.	PART NUMBER	DESCRIPTION	Q.
1	0/Bc05	Red roll	6
2	VTSa5X10	Stainless steel countersunk screw M.5x10	3
3	VTSzn5X40C	Galvanised countersunk screw M.5x40 SEDE C	3
4	0/Bc02	Lower iron flange	1
5	0/Bc03	Brass spacer	3
6	0/Bc06	Spring ring	3
7	0/Bc01	Splindle	1
8	0/Bc04	Roll rod	6
9	BRUzn6X30	Galvanized Allen screw M.6x30	1
10	C.6004Z	Bearing	2
11	BRUzn4X16	Galvanized Allen screw M.4x16	2
12	0/Bb02	Spring blade flange	1
13	BRUzn6X10	Galvanized Allen screw M.6x10	6
14	0/Bb06	Central spring	1
15	0/Bb07	Central spring safety guard	1
16	0/Bb04	Spring guide pin	1
17	0/Bb03	Central spring rotation stop	1
18	XXX	Switch	1
19	MNB34P035	Motor.220/380 Hz50-PIEDI-G. 1400-Hp 0,35	1
20	Y10	B259/258 M8 Knurled hand grip	3
21	C.629-2Z	Bearing	1
22	0/Bb01	Central sliding rod	1
23	0/Bd01	Spindle safety cover	1
24	0/Bb05	Capsule pressing device	1
25	0/Bd02	Safety cover protecting ring	1

TAV. : 08. 1

Item.	PART NUMBER	DESCRIPTION	Q.
1	0/Fa04	Elastic	1
2	VTSa5X10	Stainless steel countersunk screw M.5x10	6
3	0/Fa02	Closing ring	1
4	0/Fa03	Slide block	6
5	0/Fa01	Central casing	1





N°2---UNSCREW

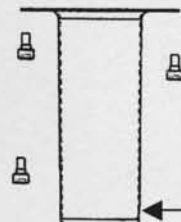
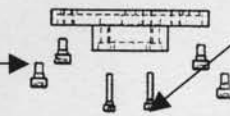


N°3---REMOVE THE 4 SCREWS
AND PULL OUT THE
WHOLE BLOCK



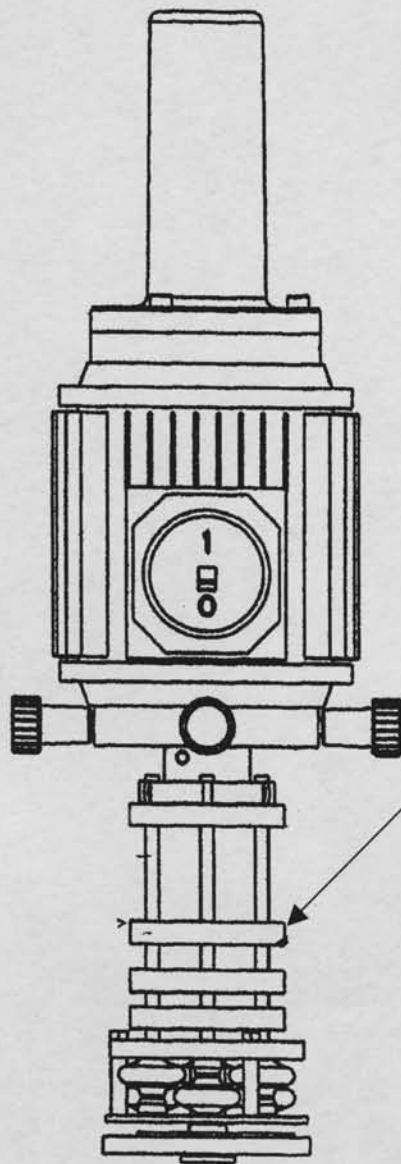
LOWERS THE ELASTICS TO THE ROLLS

N°4---UNSCREW THE 2 SCREWS M4



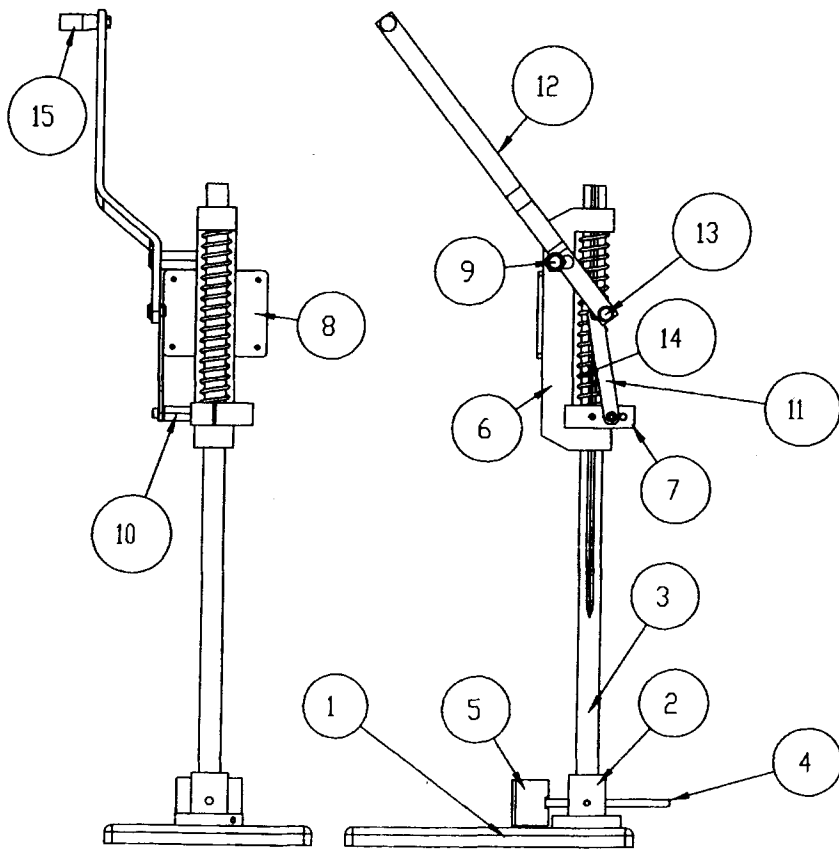
N°1---REMOVE COVER

IMPORTANT: ON ALL PLAYS AND LOWER, REPLACE HIR



LOWER THE ELASTICS TO THE ROLLS

IMPORANT !: IF ALL ELASTICS ARE LOWER, REPLACE HER



1	PART	004-01AA01	004-01AA01
2	PART	004-01AA02	004-01AA02
3	PART	004-01AA03	004-01AA03
4	PART	004-01AA04	004-01AA04
5	PART	004-01AA05	004-01AA05
6	PART	004-01AA06	004-01AA06
7	PART	004-01AA07	004-01AA07
8	PART	004-01AA10	004-01AA10
9	PART	004-01AA11	004-01AA11
10	PART	004-01AA12	004-01AA12
11	PART	004-01AA13	004-01AA13
12	PART	004-01AA14	004-01AA14
13	PART	004-01AA15	004-01AA15
14	PART	004-01AA16	004-01AA16
15	PART	MANIGLIA-ELESA	MANIGLIA-ELESA